

## 2. Vehicle Information and Reporting Safety Defects

Exterior Overview (Front View).....	2-2
Exterior Overview (Rear View).....	2-3
Interior Overview .....	2-4
Center Console Overview .....	2-6
Steering Wheel Control Overview .....	2-8
Motor Compartment Overview .....	2-9
Dimensions .....	2-10
Electric Vehicle Specifications .....	2-11
Bulb Wattage .....	2-12
Tires and Wheels.....	2-13
Air Conditioning System .....	2-14
Vehicle Weight and Luggage Volume.....	2-14
Recommended Lubricants and Capacities .....	2-14
Vehicle Identification Number (VIN).....	2-15
Vehicle Certification Label.....	2-15
Tire Specification and Pressure Label.....	2-15
Motor Number .....	2-16
Air Conditioner Compressor Label.....	2-16
Refrigerant Label .....	2-16
Reporting Safety Defects.....	2-17
Open Source Software Notice.....	2-17

Exterior Overview (Front View)



The actual shape may differ from the illustration.

(1) Hood .....	5-51
(2) Front light .....	5-65, 9-44
(3) Tires and wheels .....	9-21
(4) Side view mirror .....	5-45
(5) Front windshield wiper blades .....	5-73, 9-16
(6) Windows .....	5-47

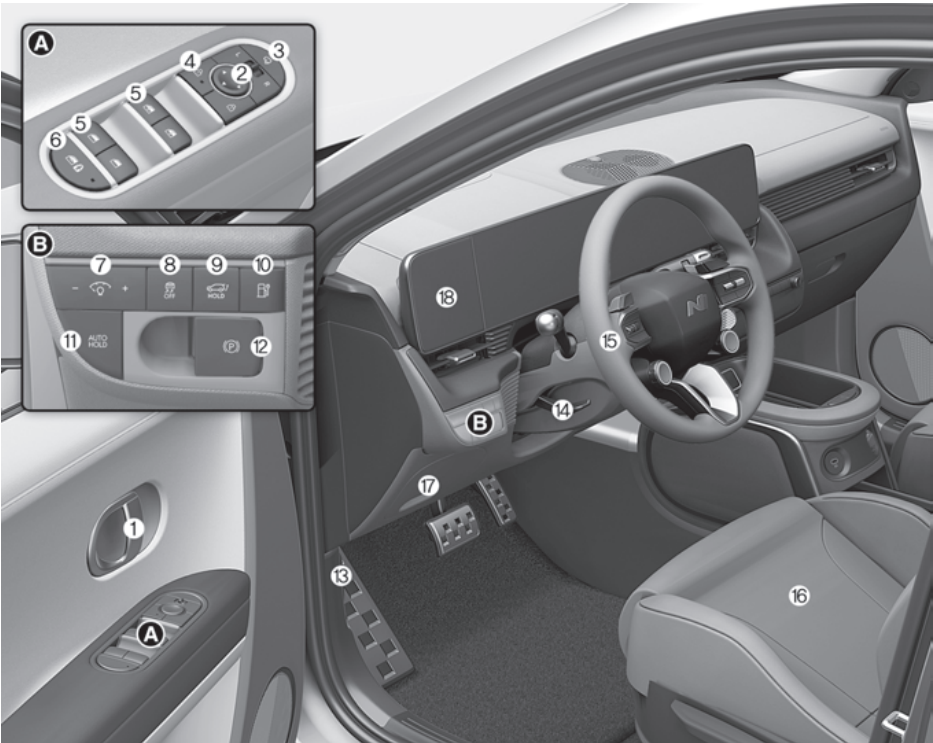
## Exterior Overview (Rear View)



The actual shape may differ from the illustration.

(1) Door .....	5-21
(2) Electric charging door .....	5-58
(3) Rear combination light .....	5-65, 9-44
(4) Power tailgate .....	5-52
(5) High mounted stop light .....	9-45
(6) Rear window wiper blade .....	5-75, 9-16
(7) Antenna .....	5-105
(8) License plate light .....	9-45

# Interior Overview



The actual shape may differ from the illustration.

(1) Inside door handle .....	5-24
(2) Side view mirror control switch.....	5-45
(3) Side view mirror folding button.....	5-46
(4) Central door lock switch .....	5-25
(5) Power window switches .....	5-47
(6) Power window lock button .....	5-48
(7) Instrument panel illumination control switch .....	5-67
(8) ESC (Electronic Stability Control) OFF button .....	6-33
(9) Power tailgate button.....	5-53
(10)Electric charging door open switch .....	5-58
(11) AUTO HOLD button .....	6-30
(12)EPB (Electronic Parking Brake) switch .....	6-27
(13)Hood release lever .....	5-51
(14)Steering wheel tilt/telescopic switch .....	5-33

(15)Steering wheel .....	5-33
(16)Seat .....	3-4
(17) Fuse box .....	9-32
(18)Cluster fascia side panel .....	5-98

# Center Console Overview

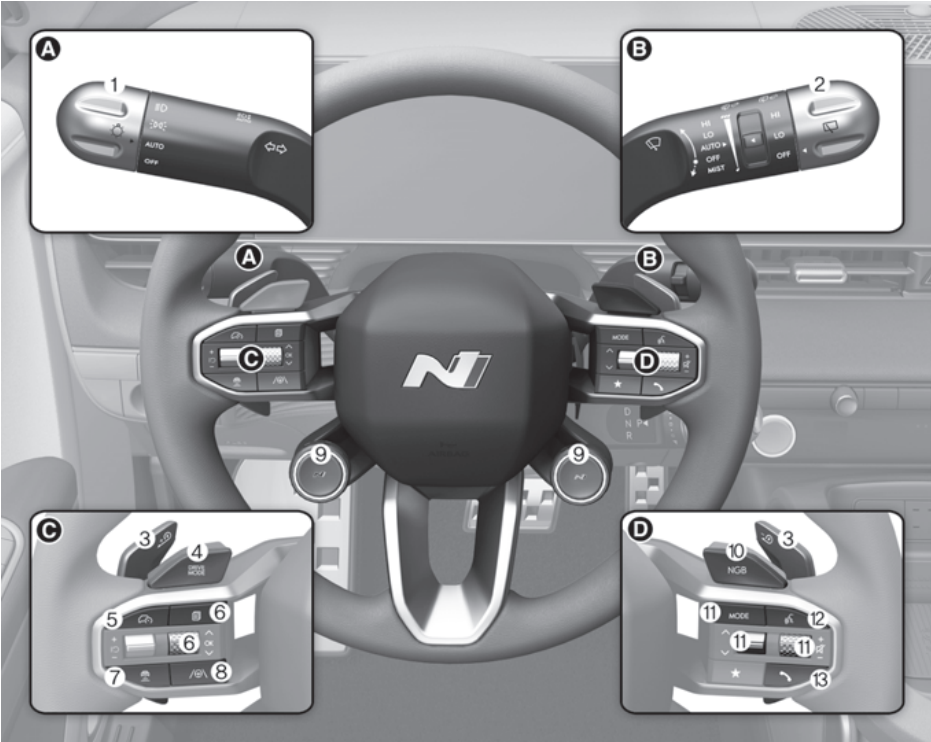


The actual shape may differ from the illustration.

(1) Instrument cluster .....	4-2
(2) Horn .....	5-35
(3) Driver's front air bag .....	3-36
(4) Start/Stop button .....	6-5
(5) Rotary shifter .....	6-9
(6) Infotainment system .....	5-105
(7) Hazard warning flasher switch .....	8-2
(8) Automatic climate control system .....	5-76
(9) USB Port/charger .....	5-105, 5-97
(10)USB Port/charger convert button .....	5-105
(11) USB Charger .....	5-97
(12)Wireless charging system indicator .....	5-99
(13)Wireless smartphone charging system .....	5-99
(14)Parking/View button .....	7-100

(15) Parking Safety button .....	7-126
(16) Power outlet .....	5-96
(17) Center console.....	5-94
(18) Glove box .....	5-95
(19) Passenger's front air bag .....	3-36

# Steering Wheel Control Overview

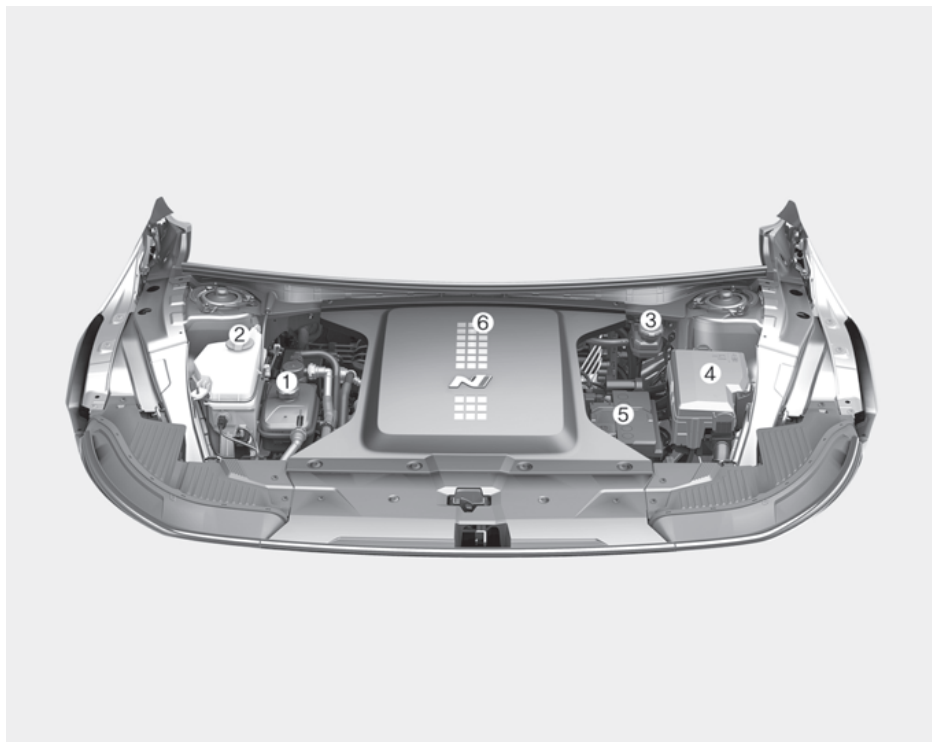


The actual shape may differ from the illustration.

(1) Lighting control lever .....	5-65
(2) Wiper and washer control lever .....	5-73
(3) Paddle shifter .....	6-15
(4) Driving mode button .....	6-44
(5) Driving Assist button .....	7-67
(6) Cluster display controls .....	4-25
(7) Vehicle Distance button .....	7-68
(8) Lane Driving Assist button .....	7-30
(9) N1/N2 button.....	6-43
(10)NGB button .....	6-55
(11) Audio remote control buttons .....	5-106
(12)Voice recognition button .....	5-106
(13)Bluetooth® hands-free phone button .....	5-107



## Motor Compartment Overview



The actual motor compartment in the vehicle may differ from the illustration.

(1) Coolant reservoir .....	9-11
(2) Windshield washer fluid reservoir .....	9-14
(3) Brake fluid reservoir .....	9-13
(4) Fuse box .....	9-32
(5) Battery (12 V) .....	9-18
(6) Cabin air filter .....	9-15

## Dimensions

Items	mm (in.)
Overall length	4,715 (185.63)
Overall width	1,940 (76.37)
Overall height	1,585 (62.40)
Front tread	1,667 (65.63)
Rear tread	1,672 (65.83)
Wheelbase	3,000 (118.11)

## Electric Vehicle Specifications

Items		Value
Motor	Max. output (kW) (With N Grin Boost)	Front 166 + Rear 282 (Front 175 + Rear 303)
	Max. torque (N·m) (With N Grin Boost)	Front 350 + Rear 390 (Front 370 + Rear 400)
Battery (Lithium-ion)	Capacity (kWh)	84.0
	Power output (kW)	535/432
	Voltage (V)	697
Charger (OBC: On-Board Battery Chargers)	Max. output (kW)	10.9 (with single-phase current) 10.5 (with three-phase current)

## Bulb Wattage

Light bulb			Bulb type
Front	Headlight	Low	LED
		High	LED
	Daytime running light/Parking light		LED
	Turn signal light		LED
	Side repeater light		LED
	Side marker light		LED
Rear	Tail/Stop light		LED
	Turn signal light		LED
	Side marker light		LED
	Reverse light		LED
	High mounted stop light		LED
	License plate light		LED
Interior	Map lamp		LED
	Room lamp		LED
	Cargo area lamp		LED
	Vanity mirror lamp		LED
	Mood lamp (Front seat door lamp, Passenger seat open tray lamp)		LED
	Glove box lamp		LED

## Tires and Wheels

Items	Tire size	Wheel size	Inflation pressure psi (kPa)						Wheel nut torque kgf·m (lbf·ft, N·m)
			Normal load (less than 160 km/h (100 mph))		High-speed driving (Over 160 km/h (100 mph))* <sup>1</sup>		Track Driving* <sup>2</sup>		
			Front	Rear	Front	Rear	Front	Rear	
Full size tire	275/35 ZR21	9.5J X 21	35 (240)	36 (250)	35 (240)	36 (250)	35 (240)	35 (240)	18-20 (130-145, 176-196)

\*1 Must drive only where the speed is legal

\*2 Refers to the recommended inflation pressure for the hot tire condition (state when the tire temperature in increased). Limited number of passengers is 2 with no luggage. After the track driving is complete, change to the appropriate tire inflation recommended for the normal road and driving condition.

### NOTICE

- It is permissible to add 3 psi (20 kPa) to the standard tire pressure specification if colder temperatures are expected soon. Tires typically lose 1 psi (7 kPa) for every 7 °C (12 °F) temperature drop. If extreme temperature variations are expected, recheck your tire pressure as necessary to keep them properly inflated.
- Tire inflation pressures may vary depending on changes in elevation (about 2.4 psi (10 kPa) for every kilometer (or mile) elevation change). If driving in areas of higher or lower elevation, be sure to check and adjust for proper tire inflation.
- Do not exceed the maximum inflation pressure, as found on the sidewall of the tire(s).

### CAUTION

When replacing tires, ALWAYS use the same size, type, brand, construction and tread pattern supplied with the vehicle. If not, it can damage the related parts or make it work irregularly.

## Air Conditioning System

Item	Weight of volume	Classification
Refrigerant	900±25 g (32±0.9 oz.)	R-1234yf
Compressor lubricant	180±10 g (6.35±0.35 oz.)	POE

Contact an authorized HYUNDAI dealer for more information.

## Vehicle Weight and Luggage Volume

Item			Value
Gross vehicle weight			2,660 kg (5,864 lbs.)
Luggage volume	Max. with TMK	behind 1st row	1,680 ℓ (59.33 cu ft.)
	Min. with TMK	behind 2nd row	740 ℓ (26.13 cu ft.)

## Recommended Lubricants and Capacities

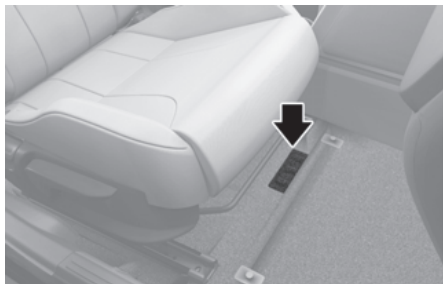
To help achieve proper vehicle performance and durability, use only lubricants of the proper quality.

These lubricants and fluids are recommended for use in your vehicle.

Lubricant		Volume	Classification
Gear fluid	Front	3.2 ℓ (3.38 US qt.)	HK ATF 65 SP4M-1
	Rear	3.4 ℓ (3.59 US qt.)	
Coolant		16.62 ℓ (17.56 US qt.)	Mixture of antifreeze and water (Phosphate-based Ethylene glycol coolant Battery for aluminum radiator)
Brake fluid		As needed	SAE J1704 DOT-4 LV, FMVSS 116 DOT-4, ISO 4925 CLASS-6
Electronic Limited Slip Differential (e-LSD) oil		480 ± 15 mℓ (0.51 ± 0.02 US qt.)	SHELL TF0870 C

## Vehicle Identification Number (VIN)

Frame number



The vehicle identification number (VIN) is the number used in registering your vehicle and in all legal matters pertaining to its ownership, etc.

The number is punched on the floor under the right front seat. To check the number, open the cover.

VIN label (if equipped)



The VIN is also on a plate attached to the top of the left side dashboard. The number on the plate can easily be seen through the windshield from outside.

## Vehicle Certification Label



The vehicle certification label attached on the driver's (or front passenger's) side center pillar gives the vehicle identification number (VIN).

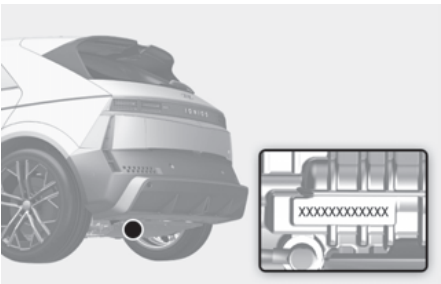
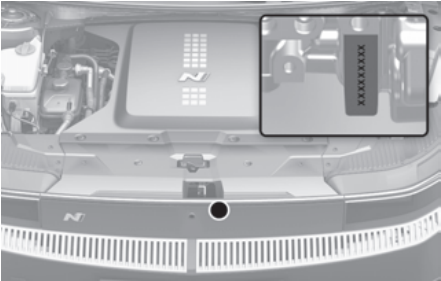
## Tire Specification and Pressure Label



The tires supplied on your new vehicle are chosen to provide the best performance for normal driving.

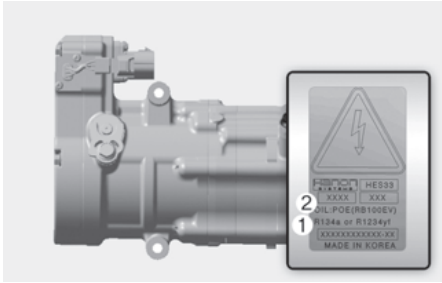
The tire label located on the driver's side center pillar gives the tire pressures recommended for your vehicle.

## Motor Number



The motor numbers can be checked at the bottom of the vehicle.

## Air Conditioner Compressor Label



A compressor label informs you the type of compressor your vehicle is equipped with such as model, supplier part number, production number, refrigerant (1) and refrigerant oil (2).

## Refrigerant Label



The refrigerant label provides information such as refrigerant type and amount. (R-1234yf)



## Reporting Safety Defects

If you believe that your vehicle has a defect which could cause a crash or could cause injury or death, you should immediately inform Transport Canada (TC) in addition to notifying HYUNDAI AUTO CANADA CORP.

Mailing Address:

Transport Canada - ASFAD

330 Sparks Street

Ottawa, ON

K1A 0N5

Telephone: 819-420-4300 (Ottawa-Gatineau area or internationally)

Toll free: 1-800-333-0510 (in Canada)

Online:

<http://www.tc.gc.ca/recalls>

If TC receives similar complaints, it may open an investigation, and if it finds that a safety defect exists in a group of vehicles, it may order a recall and remedy campaign. However, TC cannot become involved in individual problems between you, your dealer, or HYUNDAI AUTO CANADA CORP.

## Open Source Software Notice

This vehicle contains software with open source licenses. Open source software information including the source code, copyright notices and referred license terms may be obtained on the website

<https://www.hyundai.com/worldwide/opensource>

HYUNDAI Motor Company will provide the open source code to you in storage medium such as CD-ROM for minimum charge covering the cost of performing source distribution upon email request to [opensource@hyundai.com](mailto:opensource@hyundai.com) within a period of 3 years from the date of product purchase.

